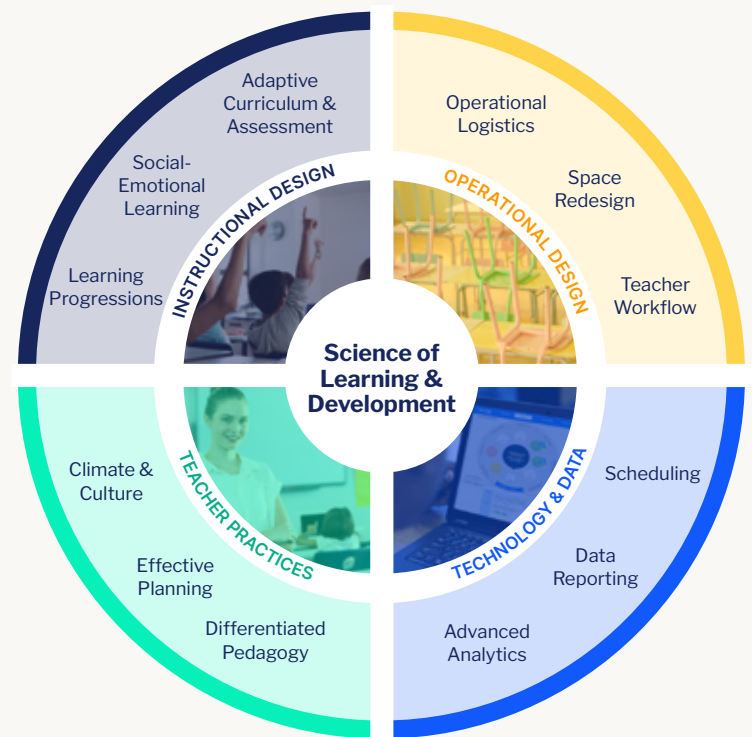


# Innovative Learning Models

**Innovative Learning Models are designed to help move us to learning that is equitable and responsive to the needs of the 21st century.**

An Innovative Learning Model is a school-based program that bundles together an interconnected set of tools, resources, systems, and instructional practices in order to shape student learning experiences toward clear objectives. Innovative Learning Models may encompass the operation of an entire school or focus on a specific subject (e.g., math) or function (e.g., schoolwide culture and practices).

Innovative Learning Models are not simply technological platforms or point solutions for teachers to use. Rather, they reflect an approach to schooling that is fundamentally different from the standardized operating model that has characterized American education for more than a century. Most essentially, they enable schools to provide individual students with an educational program that's right for them given where they are, and where they need to be.



An Innovative Learning Model typically integrates:

- an instructional design that thoughtfully incorporates components such as content, assessment, educational research, and the science of learning and development;
- an aligned set of pedagogical practices that is sustainable for teachers and leverages what they're uniquely suited to do;
- an operational design that reimagines teacher workflow, the use of time, and classroom design;
- and a technological design that embeds the use of student-level data and relevant technological tools to realize the model's vision.

In the industrial paradigm, teachers are responsible for determining how best to integrate these elements into their classroom practice—often with the aid of discrete tools such as textbooks and digital products. While some schools and school networks have designed and implemented more explicit learning models that tightly govern teachers' pedagogical practices, workflow, and instructional materials, these models generally operate within the industrial paradigm.

Innovative Learning Models are centered on the idea that the tools and resources available to support a profound shift from the industrial paradigm to a student-centered paradigm must be thoughtfully woven together into comprehensive and intentionally designed programs which schools can adopt, adapt, and integrate in order to actualize their educational vision.